

89002500

AREA

FORM NO.

MASSACHUSETTS HISTORICAL COMMISSION
80 BOYLSTON STREET
BOSTON, MA 02116

1684

Town Worcester

Address 8/10 Fairmont Avenue

Historic Name Henry Bousquet Three-
Decker

Use: Present residential

Original residential

DESCRIPTION

Date ca. 1928

Source Worcester House Directory

Style Colonial Revival/Craftsman

Architect possibly Henry Bousquet

Exterior Wall Fabric wood clapboard and
shingle

Outbuildings none

Major Alterations (with dates) none

Condition good

Moved _____ Date _____

Acreage less than 1/4 acre

Setting Early 20th century, urban,
single- and multi-family residential
neighborhood.

Recorded by Michael Steinitz

Organization for MHC

Date December 1988



Sketch Map: Draw map showing property's location in relation to nearest cross streets and/or geographical features. Indicate all buildings between inventoried property and nearest intersection(s). Indicate north

See attached map.

UTM REFERENCE 19/270650/4682230

USGS QUADRANGLE Worcester North

SCALE 1:25,000

NATIONAL REGISTER CRITERIA STATEMENT (if applicable)

The Henry Bousquet Three-Decker possesses integrity of location, design, setting, materials, workmanship, feeling and association. It is significant for its association with the development of a suburban, multi-family, ethnic, working-class neighborhood in the Bloomingdale area in the 1920s. It is also a particularly well-preserved late double three-decker that represents well the last phase of local Colonial Revival three-decker design. The Bousquet Three-Decker thus meets criteria A and C of the National Register of Historic Places on the local level.

ARCHITECTURAL SIGNIFICANCE Describe important architectural features and evaluate in terms of other buildings within the community.

Architecturally, 8/10 Fairmont Avenue is an unusually well-preserved example of late, double three-decker design that incorporates Colonial Revival elements. The house has a hip roof and is clad in wood clapboard, with shingle bands between stories. The symmetrical main facade has a central entry from which there projects a three-tier porch capped by a pedimented gable roof. The porch is supported by heavy single, double and triple square columns, set on piers on the second and third tiers. The porch also has arched openings and open balustrades. Enclosed side rear entry porches are also capped by pedimented gables that extend from the hip roof. Windows have 4/1 and 6/1 sash, and include pairs and triples on the front and side elevations.

HISTORICAL SIGNIFICANCE Explain the role owners played in local or state history and how the building relates to the development of the community.

Built ca. 1928, the Bousquet Three-Decker was one of the last three-deckers built in the Bloomingdale neighborhood, an area of suburban, multi-family, subdivisions that extended eastward from the Grafton Hill area in the 1910s and 1920s. In the Hamilton and Bloomingdale neighborhoods, Fairmont and Puritan Avenue represented the eastern edge of three-decker development. The modestly fashionable houses built in the area attracted a mix of working-class families from the city's older East Side ethnic districts, who commuted from this area by streetcar and later auto to work places in various parts of the city. The first known owner and probable builder of 8/10 Fairmont, a double three-decker, was Henry Bousquet, a carpenter who lived on Plantation Street. By 1930 the owner was listed as Otto Luder. Tenants in 1930 represented a mixture of Worcester's Irish, French-Canadian, and Swedish populations. They included Harry Hanson, a monotype operator; Ralph Smith, a grinder; Frederick Kneeland, a salesman; Alphonse Belliveau, a railroad yard foreman; Albert Plourde, a carpenter; and James Cahill, a collector.

BIBLIOGRAPHY and/or REFERENCES

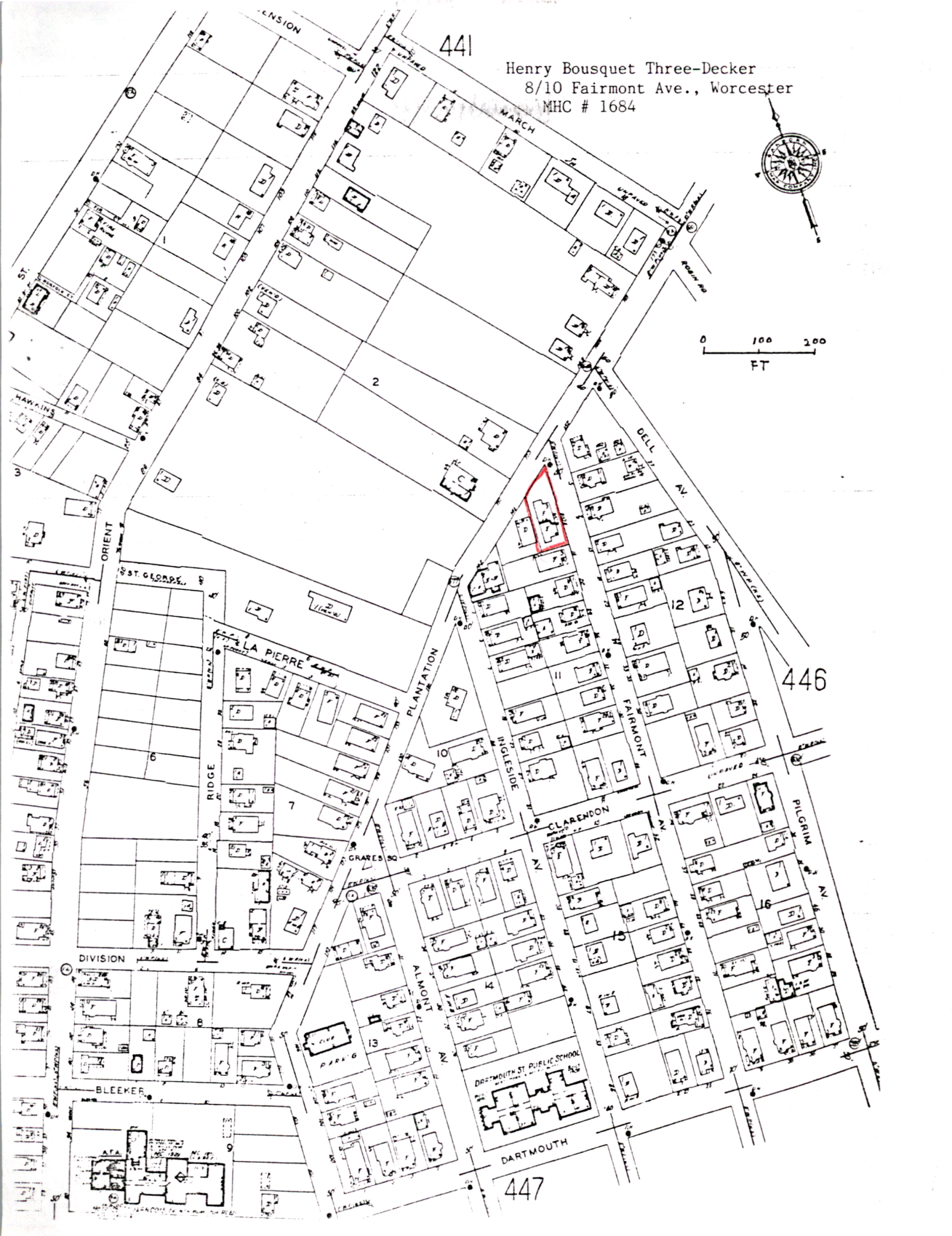
Worcester Directory, Worcester House Directory, 1928, 1930.
J. Callahan et al., Worcester Three-Decker Survey, 1981.

441

Henry Bousquet Three-Decker
8/10 Fairmont Ave., Worcester
MHC # 1684



0 100 200
FT



446

447

DARTMOUTH ST. PUBLIC SCHOOL

United States Department of the Interior
National Park Service

National Register of Historic Places
Continuation Sheet

Section number _____ Page _____

Worcester MRA (Worcester Three-Decker)

Worcester Three-Deckers MRA
Worcester County, MASSACHUSETTS

Date Listed

COVER **Substantive Review**

Jon Keeper

Bob J. Savage
02-09-90

Attest

1. Ahern, Catherine, Three-Decker

Entered in the
National Register Keeper

Helene Byers 2/9/90

Attest

2. Anderson, Ludwig, Three-Decker

Entered in the
National Register Keeper

Helene Byers 2/9/90

Attest

3. Baker, Peter, Three-Decker

Entered in the
National Register Keeper

Helene Byers 2/9/90

Attest

4. Battelle, Marion, Three-Decker

Entered in the
National Register Keeper

Helene Byers 2/9/90

Attest

5. Beaver Street Historic District

Entered in the
National Register Keeper

Helene Byers 2/9/90

Attest

6. Blodgett, Lydia, Three-Decker

Entered in the
National Register Keeper

Helene Byers 2/9/90

Attest

7. Bostrom, Eric, Three-Decker

Entered in the
National Register Keeper

Helene Byers 2/9/90

Attest

8. Bousquet, Henry, Three-Decker

Entered in the
National Register Keeper

Helene Byers 2/9/90

Attest

9. Carlson, Eric, Three-Decker

Entered in the
National Register Keeper

Helene Byers 2/9/90

Attest

10. Crabtree, Thomas, Three-Decker

Entered in the
National Register Keeper

Helene Byers 2/9/90

Attest